



16/30 Russell Street MELBOURNE, VIC



1



1

Warehouse Apartment - Circa 1915

HOW DO I REGISTER TO INSPECT ? - Instructions available below this ad.

This one of a kind Warehouse style apartment is perfectly positioned along leafy tree-lined Russell Street.

Ideal for someone seeking a unique apartment that offers spacious, split level living full of character and charm.

Features include -

- Well-appointed kitchen with induction stove top & stainless-steel appliances
- Light & bright living with high ceilings and large window bay
- Unique mezzanine bedroom
- Large neutral bathroom with shower over bath, walk in wardrobe & European Laundry
- Secure building with lift access

Ideally located moments only from Federation square, Flinders St, Bourke St mall, theatres, sports, Chinatown & Melbourne's best restaurants and cafes.

\$550 per week

Type: Apartment

Date Available: 31/10/2024

Bond: \$2390

Mikaele Horsnell

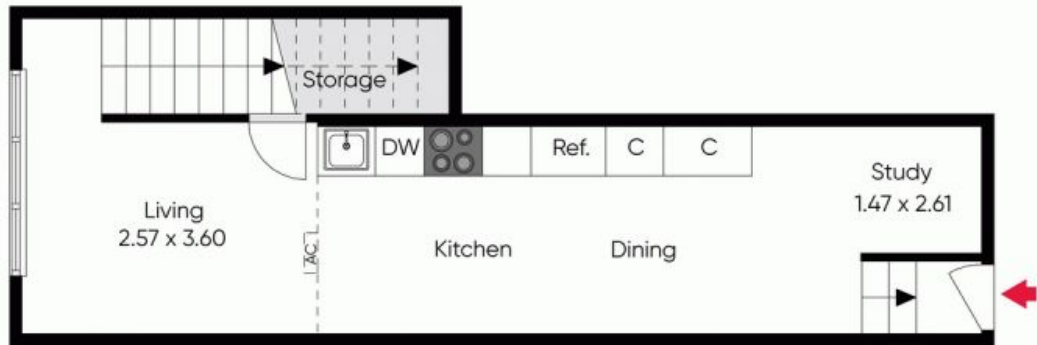
0396648100

Jim Georgiou

0396648108



First Floor



Ground Floor

The floor plan is not to scale. Measurements are indicative and in metres.

Produced by DIAKRIT